



شركة صناعات المنتجات الجديدة المحدودة  
NEW PRODUCTS INDUSTRIES CO. LTD.

## PVC & CPVC Schedule 40 & 80 ASTM Fittings

For Potable Water and Pressurized Liquid Systems



Only products  
bearing the NSF mark  
are certified



Intertek



التوزيع من قبل شركة المؤسسة الوطنية للتسويق المحدودة  
Distributed by NATIONAL MARKETING EST. CO. LTD.  
[www.namat.com](http://www.namat.com)



# Certifications



## CERTIFICATE OF REGISTRATION

This is to certify that the management system of:

**New Products Industries Co. Ltd. (NEPROPLAST)**

Main Site: PO Box 460, Street No 53, Industrial City – Phase 3, Jeddah – 21411, Kingdom of Saudi Arabia

See appendix for additional sites and additional site scopes

has been registered by Intertek as conforming to the requirements of:

**ISO 9001:2015**

The management system is applicable to:

The Manufacture of HDPE Pipes & Fittings, UPVC (PVC) & CPVC Pipes and Fittings

Certificate Number: 0115617

Initial Certification Date: 20 September 2012

Date of Certification Decision: 06 July 2022

Issuing Date: 06 July 2022

Valid Until: 19 September 2024



**Calin Moldovean**  
President, Business Assurance

Intertek Certification Limited, 55A Victory Park, Victory Road, Derby DE24 8EP, United Kingdom

Intertek Certification Limited is a UKAS accredited body under certificate of accreditation no. 054



In the issuance of this certificate, Intertek assumes no liability to any party other than to the Client, and their only responsibility is to the Client in accordance with the signed upon Certificate Agreement. This certificate is valid only in the registration maintaining their system in accordance with Intertek's requirements for services certificate. Validity may be confirmed on email at [certification@intertek.com](mailto:certification@intertek.com) or by scanning the code to the right with a smartphone. The certificate remains the property of Intertek, and shall be returned upon request.

1



## CERTIFICATE OF REGISTRATION

This is to certify that the management system of:

**New Products Industries Co. Ltd. (NEPROPLAST)**

Main Site: PO Box 460, Street No 53, Industrial City – Phase 3, Jeddah – 21411, Kingdom of Saudi Arabia

See appendix for additional sites and additional site scopes

has been registered by Intertek as conforming to the requirements of:

**ISO 45001:2018**

Certified to OHSAS 18001:2007 from 19 01 2015 to 07 06 2021

The management system is applicable to:

The Manufacture of UPVC, CPVC Plastic Pipes

Certificate Number: 0114532

Initial Certification Date: 13 January 2015

Last Certificate Expiry Date: 11 March 2021

Date of Last Recertification Audit: 06 March 2021

Certification Cycle Start Date: 07 June 2021

Issuing Date: 07 June 2021

Valid Until: 18 January 2024



**Calin Moldovean**  
President, Business Assurance

Intertek Certification Limited, 55A Victory Park, Victory Road, Derby DE24 8EP, United Kingdom

Intertek Certification Limited is a UKAS accredited body under certificate of accreditation no. 054



In the issuance of this certificate, Intertek assumes no liability to any party other than to the Client, and their only responsibility is to the Client in accordance with the signed upon Certificate Agreement. This certificate is valid only in the registration maintaining their system in accordance with Intertek's requirements for services certificate. Validity may be confirmed on email at [certification@intertek.com](mailto:certification@intertek.com) or by scanning the code to the right with a smartphone. The certificate remains the property of Intertek, and shall be returned upon request.

2

## NSF International

RECOGNIZES

**New Products Industries Co., Ltd. (Neproplast)**

Facility: Jeddah, Saudi Arabia

AS COMPLYING WITH NSF/ANSI 14, 61 AND ALL APPLICABLE REQUIREMENTS.

PRODUCTS APPEARING IN THE NSF OFFICIAL LISTING ARE AUTHORIZED TO BEAR THE NSF MARK.





This certificate is the property of NSF International and must be returned upon request. For the most current and complete information, please access NSF's website ([www.nsf.org](http://www.nsf.org))

June 17, 2013

Certificate# C0026966 - 02



David Parkiss  
General Manager, Water Systems

3

1 Intertek: ISO 9001 : 2015

2 Intertek: ISO 45001 : 2018

3 NSF Product & Service Listings "ONLY PRODUCTS BEARING THE NSF MARK ARE CERTIFIED"

# ●●● I. Introduction

**NEPROPLAST** is keen to be associated with the world's pronounced leader of raw material manufacturers, to attain the highest standard quality of its PVC Fittings and its licensed FlowGuard™ cPVC fittings. NEPROPLAST products are maintained throughout the operation by a Quality Assurance System based on ISO 9001:2015 covering both the raw materials and finished products which guarantee the right materials for Hot & Cold water installations demanding safe, tough and reliable systems. NEPROPLAST has been assessed and certified by INTERTEK body of United Kingdom for its Quality Management System to International Quality System Standard EN ISO 9001:2015. NEPROPLAST manufactured FlowGuard™ cPVC & PVC fittings are tested, approved and listed by NSF/ANSI 61 (USA) an "Approved product for use with drinking water".

## **MATERIAL**

NEPROPLAST PVC & FlowGuard™ cPVC fittings are manufactured in the Kingdom of Saudi Arabia from compounds approved for drinking water by NSF (USA) & WRC (UK). Fully meeting or exceeding the requirements of ASTM materials and dimensional standards. Compounds are meeting requirements specified in Table 1.

## **MARKINGS**

NEPROPLAST PVC & FlowGuard™ cPVC fittings are marked as prescribed in the ASTM Standard indicating Manufacturer Name, Standard, Size, Type & NEPROPLAST logo or Pipe Thread Size.



**MADE IN KSA  
BY  
NEPROPLAST  
(Logo)**

**6"X45° SCH. 40  
PVC I  
ASTM D2466**

## **APPLICATIONS**

NEPROPLAST PVC & cPVC FlowGuard™ fittings are suitable for Hot & Cold drinking water systems and can be utilized in commercial and industrial plumbing applications (in which metal fittings will not tolerate the reactive effect of chemicals and corrosive materials), cooling water, plants distribution lines, chemical and wastewater systems, acid products handling for refineries, metal works and plating plants, bleach, dye and acid lines in textile mills, de-ionized water, piping for the dairy, canning and beverage industries, chlorine injection systems, etc.



## II. Standards and Dimensions

Table No. 1.0

| Schedule 40 PVC Fittings   | Material   |
|--|--|
| ASTM - D - 2466 Poly Vinyl Chloride (PVC) Plastic Pipe Fittings Schedule 40.                   | Produced from PVC Type 1, cell classification 12454 as defined in ASTM D1784.  |
| Schedule 80 PVC Fittings   | Material   |
| ASTM - D - 2467 Type Rigid Poly Vinyl Chloride (PVC) Plastic Pipe Fittings Schedule 80.        | Produced from PVC Type 1, cell classification 12454 as defined in ASTM D1784.  |
| Schedule 80 CPVC Fittings  | Material   |
| ASTM - F - 439 Type Chlorinated Poly Vinyl Chloride (PVC) Plastic Piping Fittings Schedule 80. | Produced from CPVC material meeting ASTM cell classification 23447 as defined in ASTM D1784.   |
| Schedule 80 PVC & CPVC Transition Fittings   | Material   |
| ASTM - F - 1970 Special engineered PVC / CPVC - Brass Insert Transition Fittings.              | <p><b>For PVC :</b> Produced from PVC Type 1, cell classification 12454 as defined in ASTM D1784.</p> <p><b>For CPVC :</b> Produced from CPVC material meeting ASTM classification 23447 as defined in ASTM D1784.</p> <p><b>For Brass Insert :</b> Brass Insert material meets BS EN 12164.</p> |



### COLOR

- Schedule 40 PVC Fittings - White
- Schedule 80 PVC Fittings - Dark Grey
- Schedule 80 CPVC Fittings - Light Grey

### PRESSURE RATING

#### Schedule 40 PVC Fittings

Water Pressure rating (max) for PVC Schedule 40 Fittings at 73°F (23°C)

Table No. 2.0

| Pipe Size | Socket Fittings |
|-----------|-----------------|
| Inch      | psi             |
| 1/2       | 600             |
| 3/4       | 480             |
| 1         | 450             |
| 1 1/4     | 370             |
| 1 1/2     | 330             |
| 2         | 280             |
| 2 1/2     | 300             |
| 3         | 260             |
| 4         | 220             |
| 6         | 180             |
| 8         | 160             |

### OPERATING TEMPERATURE

Schedule 40 and Schedule 80 PVC Fittings are operated at maximum service temperature at 140°F. Schedule 80 CPVC Fittings are operated at maximum service temperature of 199°F

### PRESSURE RATING

#### Schedule 80 PVC and CPVC Fittings

Water Pressure rating (max) for PVC and CPVC Schedule 80 Fittings at 73°F (23°C)

Table No. 3.0

| Pipe Size | Socket Fittings | Threaded Fittings |
|-----------|-----------------|-------------------|
| Inch      | psi             | psi               |
| 1/2       | 850             | 420               |
| 3/4       | 690             | 340               |
| 1         | 630             | 320               |
| 1 1/4     | 520             | 260               |
| 1 1/2     | 470             | 240               |
| 2         | 400             | 200               |
| 2 1/2     | 420             | 210               |
| 3         | 370             | 190               |
| 4         | 320             | 160               |
| 6         | 280             | 140               |
| 8         | 250             | 120               |

# III. Temperature Pressure Relationship

With an increase of operating temperature, pressure ratings must be reduced accordingly as indicated **Table No. 3.0** below.

|                           | Temperature | Derating                          |
|---------------------------|-------------|-----------------------------------|
| Schedule 40 PVC Fittings  | 80° F       | 88% of rated temperature at 73° F |
|                           | 100° F      | 62% of rated temperature at 73° F |
|                           | 120° F      | 40% of rated temperature at 73° F |
|                           | 140° F      | 22% of rated temperature at 73° F |
| Schedule 80 PVC Fittings  | 80° F       | 88% of rated temperature at 73° F |
|                           | 90° F       | 75% of rated temperature at 73° F |
|                           | 100° F      | 62% of rated temperature at 73° F |
|                           | 110° F      | 50% of rated temperature at 73° F |
|                           | 120° F      | 40% of rated temperature at 73° F |
|                           | 130° F      | 30% of rated temperature at 73° F |
| Schedule 80 cPVC Fittings | 80° F       | 96% of rated temperature at 73° F |
|                           | 100° F      | 83% of rated temperature at 73° F |
|                           | 120° F      | 70% of rated temperature at 73° F |
|                           | 140° F      | 57% of rated temperature at 73° F |
|                           | 160° F      | 44% of rated temperature at 73° F |
|                           | 180° F      | 31% of rated temperature at 73° F |
|                           | 200° F      | 18% of rated temperature at 73° F |

# IV. Solvent Cement Welding

This method of joining is very simple and reliable if it is followed correctly, but any deviations from the recommended basic steps may reduce the strength and integrity of the joint. The procedures for preparation, insertion and curing should be followed very carefully. For further details consult the office of National Marketing Est. Co. Ltd.

Wheel Cutter



Deburring / Beveling



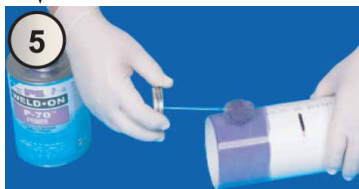
Dry fit pipe & fitting



PRIMER APPLICATION  
(Fitting-Pipe-Fitting)



Primer Application



Primer Application



Primer Application

SOLVENT CEMENT APPLICATION  
(Pipe-Fitting-Pipe)



Solvent Cement Application



Solvent Cement Application

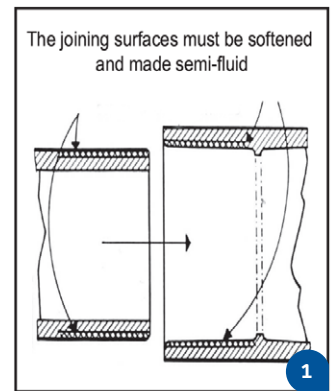
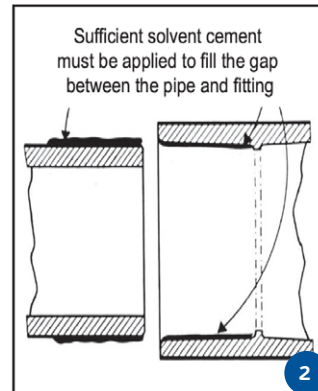
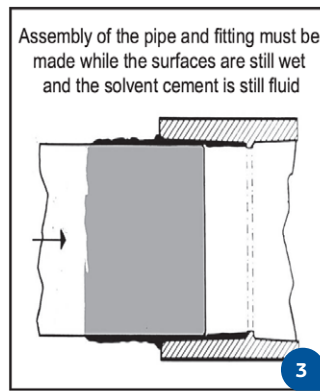
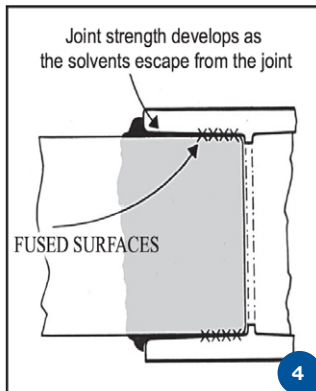


Solvent Cement Application

ASSEMBLY & CLEANING



## ●●● V. Installation & Advantages



### SAFETY PRECAUTIONS

Solvent cement and primer contain highly volatile solvents. Use them in a well ventilated area, keep away from naked flames, avoid smoking, switch off unprotected electrical apparatus and electric heaters, discontinue any welding operations, observe all instructions issued by solvent cement manufacturer & always obey the safety regulations issued by the authorities responsible.

### ADVANTAGES OF PRIMER

- Penetrates the surface preparing for the 'fusion'
- Softens the surfaces faster than solvent cement alone
- For Schedule 80 pressure applications
- On hard surfaces, like CPVC
- In cold temperatures

## ●●● VI. Advantages of Neproplast PVC & cPVC fittings

### CORROSION RESISTANCE & SCALE BUILD UP

NEPROPLAST PVC & cPVC fittings are chemically resistant to nearly all acids, alkalis, alcohols, halogens as well as many other corrosive fluids. Being non-conductor of electricity, it eliminates galvanic or electrolytic corrosion which is the cause of expensive repairs. NEPROPLAST PVC & cPVC non-corroding properties ensure improved flow, lower maintenance costs and longer performance life.

### SELF EXTINGUISHING

NEPROPLAST PVC & cPVC fittings do not support combustion and are self extinguishing. Pipes will not burn unless an external flame source is applied. NEPROPLAST PVC & cPVC fittings are non-toxic and will not affect taste, smell or color of drinking water or any other liquid. Extensive tests on PVC & cPVC compounds prove their outstanding fire performance.

### REDUCED ADDITIVE MIGRATION

NEPROPLAST PVC & cPVC fittings do not allow migration of additives into water supply and hence no bad odour or taste of drinking water.

### EASE OF HANDLING, INSTALLATION & MAINTENANCE

NEPROPLAST PVC & cPVC fittings pipes are quick and easy to install and maintained with complete range of solvent cement fittings saving time, effort and money as it is light in weight and easy to handle.

### CHEMICAL RESISTANCE

NEPROPLAST PVC & cPVC fittings have excellent chemical resistance against most acids, alcohols, alkalis, salt solutions and halogens. NEPROPLAST PVC & cPVC fittings are also not adversely affected by atmospheric conditions and are well suited for outdoor installations. For specific applications see the NEPROPLAST chemical resistance guide.

### LOW BACTERIA BUILD UP

Studies shows that bacteria build up with NEPROPLAST PVC & cPVC fittings are far lower than with alternative piping materials NEPROPLAST PVC & cPVC piping systems are resistant to fungi and bacterial growth, particularly those which cause corrosion in metal piping systems.

### THERMAL CONDUCTIVITY

NEPROPLAST PVC & cPVC fittings have lower thermal conductivity than for metal which reduces heat losses (essentially acts as an insulator) and offer better uniform fluid temperature, prevent "sweating" formation of condensation on the pipe wall. Insulation in certain instances, may be completely eliminated.

### FLUID FRICTION

NEPROPLAST PVC & cPVC fittings being a mirror-smooth inner surface has lower friction loss as compared to metals, i.e. lower pressure losses.

# VII. Physical Properties

Table No. 5.0

|                  | UNIT | PVC         | CPVC        | ASTM TEST |
|------------------|------|-------------|-------------|-----------|
| Specific Gravity | g/cc | 1.40 - 1.43 | 1.52 - 1.55 | D-792     |
| Cell Designation |      | 12454       | 23447       | D-1784    |

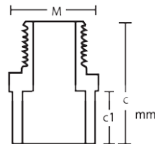
| MECHANICAL  |                    |         |         |       |
|---|--------------------|---------|---------|-------|
| Izod Impact<br>@ 23°C (73°F)                      | J/m of notch       | 34.7    | 80.1    | D-256 |
|   | ft. lb/in of notch | 0.65    | 1.6     |       |
| Tensile Strength<br>@ 23°C (73°F)                 | Mpa                | 48.3    | 55.2    | D-638 |
|   | Psi                | 7000    | 8000    |       |
| Modulus of Elasticity in Tension<br>@ 23°C (73°F) | Mpa                | 2758    | 2482    | D-638 |
|   | Psi                | 400,000 | 360,000 |       |
| Flexural Strength<br>@ 23°C (73°F)                | Mpa                | 87.6    | 104.1   | D-790 |
|   | Psi                | 12700   | 15000   |       |
| Relative Hardness @ 23°C (73°F)                   | Rockwell "R"       | 120     | 119     | D-785 |

| THERMODYNAMICS                                      |                               |      |      |            |
|---|-------------------------------|------|------|------------|
| Thermal Conductivity                                | Wm/°k                         | 0.17 | 0.14 | ASTM C177  |
|   | Btu.in/hr/ft <sup>2</sup> /°F | 1.2  | 0.95 |            |
| Heat Deflection Temperature<br>@ 1.82 Mpa (264 psi) | °C                            | 71.1 | 103  | ASTM D-648 |
|   | °F                            | 160  | 217  |            |
| Maximum Operating Temperature                       | °C                            | 60   | 93   | ASTM D2837 |
|   | °F                            | 140  | 210  |            |

| ELECTRICAL                          |          |                        |                      |       |
|-------------------------------------|----------|------------------------|----------------------|-------|
| Dielectric Strength                 | KV/mm    | 55                     | 49                   | D-147 |
|                                     | V/Mil    | 1400                   | 1250                 |       |
| Volume Resistivity<br>@ 23°C (73°F) | Ohm-cm   | 3.5x10 <sup>15</sup> " | 3.4x10 <sup>15</sup> | D-257 |
|                                     | Ohm-inch | 899x10 <sup>12</sup> " | 1.3384               |       |

# VIII. Schedule 80 PVC & cPVC Fittings

## MALE ADAPTORS



PVC Male Adaptors (Fig. A)

cPVC Male Adaptors (Fig. B)



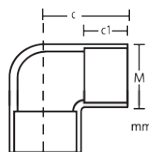
| Nominal Pipe Size (inch) | PVC Code #   | C     | C1    | M     | cPVC Code #  | Nominal Pipe Size (inch) |
|--------------------------|--------------|-------|-------|-------|--------------|--------------------------|
| 1/2                      | 124SN - K12  | 47.70 | 23.25 | 29.85 | 244SN / K12  | 1/2                      |
| 3/4                      | 124SN - K34  | 52.80 | 26.05 | 37.75 | 244SN / K34  | 3/4                      |
| 1                        | 124SN - K1   | 61.70 | 29.60 | 43.50 | 244SN / K1   | 1                        |
| 1 1/4                    | 124SN - K114 | 65.09 | 32.15 | 52.39 | 244SN / K114 | 1 1/4                    |
| 1 1/2                    | 124SN - K112 | 68.26 | 35.32 | 59.93 | 244SN / K112 | 1 1/2                    |
| 2                        | 124SN - K2   | 73.82 | 38.89 | 73.42 | 244SN / K2   | 2                        |



(Fig. A)

(Fig. B)

## ELBOWS (90°)



PVC Elbow 90° (Fig. A)

cPVC Elbow 90° (Fig. B)



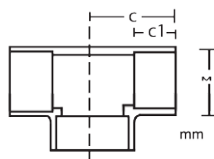
| Nominal Pipe Size (inch) | PVC Code #   | C      | C1    | M      | cPVC Code #  | Nominal Pipe Size (inch) |
|--------------------------|--------------|--------|-------|--------|--------------|--------------------------|
| 1/2                      | 124SN - G12  | 36.10  | 23.00 | 29.80  | 244SN / G12  | 1/2                      |
| 3/4                      | 124SN - G34  | 40.55  | 26.55 | 35.60  | 244SN / G34  | 3/4                      |
| 1                        | 124SN - G1   | 46.96  | 29.90 | 43.70  | 244SN / G1   | 1                        |
| 1 1/4                    | 124SN - G114 | 54.77  | 32.54 | 53.98  | 244SN / G114 | 1 1/4                    |
| 1 1/2                    | 124SN - G112 | 60.72  | 25.32 | 60.72  | 244SN / G112 | 1 1/2                    |
| 2                        | 124SN - G2   | 69.85  | 38.89 | 73.03  | 244SN / G2   | 2                        |
| 2 1/2                    | 124SN - G212 | 81.70  | 45.65 | 53.19  | 244SN / G212 | 2 1/2                    |
| 3                        | 124SN - G3   | 96.20  | 49.50 | 105.6  | 224SN / G3   | 3                        |
| 4                        | 124SN - G4   | 116.75 | 56.80 | 132.86 | 224SN / G4   | 4                        |
| 6                        | 124SN - G6   | 167.6  | 77.7  | 191.43 | 224SN / G6   | 6                        |



(Fig. A)

(Fig. B)

## TEE (90°)



PVC TEE 90° (Fig. A)

cPVC TEE 90° (Fig. B)



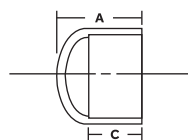
| Nominal Pipe Size (inch) | PVC Code #   | C      | C1    | M      | cPVC Code #  | Nominal Pipe Size (inch) |
|--------------------------|--------------|--------|-------|--------|--------------|--------------------------|
| 1/2                      | 124SN - T12  | 37.09  | 23.00 | 29.80  | 224SN / T12  | 1/2                      |
| 3/4                      | 124SN - T34  | 41.18  | 26.25 | 35.60  | 244SN / T34  | 3/4                      |
| 1                        | 124SN - T1   | 47.66  | 29.90 | 43.70  | 244SN / T1   | 1                        |
| 1 1/4                    | 124SN - T114 | 54.77  | 32.54 | 53.60  | 244SN / T114 | 1 1/4                    |
| 1 1/2                    | 124SN - T112 | 61.12  | 25.32 | 60.72  | 244SN / T112 | 1 1/2                    |
| 2                        | 124SN - T2   | 71.83  | 38.89 | 73.03  | 244SN / T2   | 2                        |
| 3                        | 124SN - T3   | 93.74  | 47.63 | 106.54 | 224SN / T3   | 3                        |
| 4                        | 124SN - T4   | 106.20 | 57.90 | 133.34 | 224SN / T4   | 4                        |
| 6 x 4                    | 124SN - T6X4 | 148.38 | 76.58 | 180.33 | 224SN / T6X4 | 6 x 4                    |
| 6                        | 124SN - T6   | 164.60 | 76.67 | 192.84 | 224SN / T6   | 6                        |



(Fig. A)

(Fig. B)

## END CAP

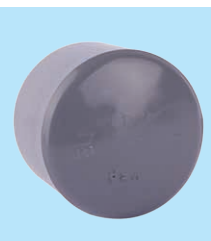


PVC End Cap (Fig. A)

cPVC End Cap (Fig. B)



| Nominal Pipe Size (inch) | PVC Code #   | A (mm) | C (mm) | cPVC Code #  | Nominal Pipe Size (inch) |
|--------------------------|--------------|--------|--------|--------------|--------------------------|
| 1/2                      | 124SN - C12  | 32.0   | 23.0   | 224SN / C12  | 1/2                      |
| 3/4                      | 124SN - C34  | 35.0   | 26.2   | 224SN / C34  | 3/4                      |
| 1                        | 124SN - C1   | 39.5   | 29.4   | 224SN / C1   | 1                        |
| 1 1/4                    | 124SN - C114 | 44.0   | 32.5   | 224SN / C114 | 1 1/4                    |
| 1 1/2                    | 124SN - C112 | 48.0   | 35.7   | 224SN / C112 | 1 1/2                    |
| 2                        | 124SN - C2   | 51.0   | 38.9   | 224SN / C2   | 2                        |



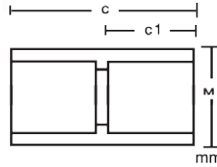
(Fig. A)

(Fig. B)



Schedule 80 PVC & cPVC Fittings

**COUPLINGS**



PVC Couplings (Fig. A)

cPVC Couplings (Fig. B)



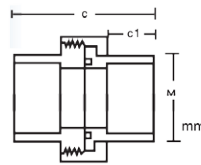
(Fig. A)

| Nominal Pipe Size (inch) | PVC Code #   | C      | C1     | M      | cPVC Code #  | Nominal Pipe Size (inch) |
|--------------------------|--------------|--------|--------|--------|--------------|--------------------------|
| 1/2                      | 124SN - M12  | 49.40  | 23.40  | 33.45  | 244SN / M12  | 1/2                      |
| 3/4                      | 124SN - M34  | 55.55  | 26.20  | 37.75  | 244SN / M34  | 3/4                      |
| 1                        | 124SN - M1   | 63.00  | 30.30  | 45.30  | 244SN / M1   | 1                        |
| 1 1/4                    | 124SN - M114 | 67.47  | 32.14  | 53.18  | 244SN / M114 | 1 1/4                    |
| 1 1/2                    | 124SN - M112 | 74.71  | 35.32  | 60.32  | 244SN / M112 | 1 1/2                    |
| 2                        | 124SN - M2   | 80.56  | 38.10  | 73.42  | 244SN / M2   | 2                        |
| 2 1/2                    | 124SN - M212 | 96.90  | 46.25  | 88.60  | 244SN / M212 | 2 1/2                    |
| 3                        | 124SN - M3   | 102    | 48.00  | 106.01 | 224SN / M3   | 3                        |
| 4                        | 124SN - M4   | 120.02 | 56.67  | 132.67 | 224SN / M4   | 4                        |
| 6                        | 124SN - M6   | 81.50  | 76.60  | 195.28 | 224SN / M6   | 6                        |
| 8                        | 124SN - M8   | 210.08 | 102.11 | 245.90 | 224SN / M8   | 8                        |



(Fig. B)

**UNIONS**



PVC Unions (Fig. A)

cPVC Unions (Fig. B)



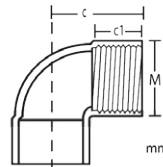
(Fig. A)

| Nominal Pipe Size (inch) | PVC Code #   | C     | C1    | M     | cPVC Code #  | Nominal Pipe Size (inch) |
|--------------------------|--------------|-------|-------|-------|--------------|--------------------------|
| 1/2                      | 124SN - B12  | 53.00 | 22.65 | 32.20 | 244SN / B12  | 1/2                      |
| 3/4                      | 124SN - B34  | 62.20 | 26.00 | 38.00 | 244SN / B34  | 3/4                      |
| 1                        | 124SN - B1   | 67.50 | 29.10 | 41.00 | 244SN / B1   | 1                        |
| 1 1/4                    | 124SN - B114 | 74.35 | 32.70 | 55.85 | 244SN / B114 | 1 1/4                    |
| 1 1/2                    | 124SN - B112 | 82.40 | 36.00 | 60.70 | 244SN / B112 | 1 1/2                    |
| 2                        | 124SN - B2   | 94.00 | 39.00 | 75.80 | 244SN / B2   | 2                        |



(Fig. B)

**THREADED ELBOWS**



PVC Threaded Elbows (Fig. A)

cPVC Threaded Elbows (Fig. B)



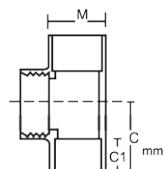
(Fig. A)

| Nominal Pipe Size (inch) | PVC Code #   | C     | C1    | M     | cPVC Code #  | Nominal Pipe Size (inch) |
|--------------------------|--------------|-------|-------|-------|--------------|--------------------------|
| 1/2                      | 124SN - GF12 | 31.75 | 19.30 | 32.09 | 244SN / GF12 | 1/2                      |
| 3/4                      | 124SN - GF34 | 34.70 | 19.05 | 35.50 | 244SN / GF34 | 3/4                      |



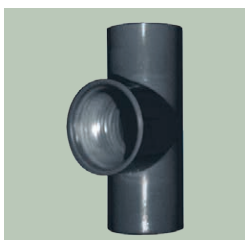
(Fig. B)

**THREADED TEE 90°**



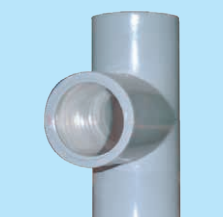
PVC Threaded TEE 90° (Fig. A)

cPVC Threaded TEE 90° (Fig. B)



(Fig. A)

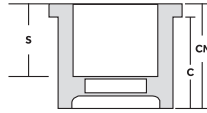
| Nominal Pipe Size (inch) | PVC Code #   | C     | C1    | M     | cPVC Code #  | Nominal Pipe Size (inch) |
|--------------------------|--------------|-------|-------|-------|--------------|--------------------------|
| 1/2                      | 124SN - TF12 | 37.09 | 23.60 | 29.75 | 224SN / TF12 | 1/2                      |
| 3/4                      | 124SN - TF34 | 41.18 | 26.50 | 35.60 | 224SN / TF34 | 3/4                      |



(Fig. B)

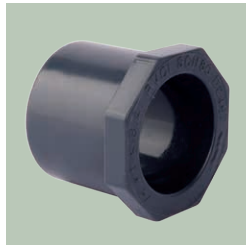
# Schedule 80 PVC & cPVC Fittings

## REDUCER BUSHING



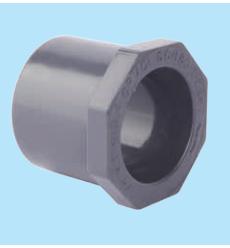
PVC Reducer Bushing (Fig. A)

cPVC Reducer Bushing (Fig. B)



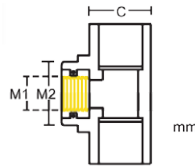
(Fig. A)

| Nominal Pipe Size (inch) | PVC Code #     | S (mm) | C (mm) | CM (mm) | cPVC Code #    | Nominal Pipe Size (inch) |
|--------------------------|----------------|--------|--------|---------|----------------|--------------------------|
| 3/4 x 1/2                | 124SN-R34X12   | 23.9   | 26.5   | 35.5    | 224SN/R34X12   | 3/4 x 1/2                |
| 1 x 1/2                  | 124SN-R1X12    | 23.0   | 29.4   | 38.9    | 224SN/R1X12    | 1 x 1/2                  |
| 1 x 3/4                  | 124SN-R1X34    | 26.9   | 29.5   | 38.5    | 224SN/R1X34    | 1 x 3/4                  |
| 1 1/4 x 3/4              | 124SN-R114X34  | 26.1   | 32.5   | 42.0    | 224SN/R114X34  | 1 1/4 x 3/4              |
| 1 1/4 x 1                | 124SN-R114X1   | 29.4   | 32.5   | 42.0    | 224SN/R114X1   | 1 1/4 x 1                |
| 1 1/2 x 3/4              | 124SN-R112X34  | 26.1   | 35.7   | 45.2    | 224SN/R112X34  | 1 1/2 x 3/4              |
| 1 1/2 x 1                | 124SN-R112X1   | 29.4   | 35.7   | 45.2    | 224SN/R112X1   | 1 1/2 x 1                |
| 1 1/2 x 1 1/4            | 124SN-R112X114 | 32.5   | 35.7   | 45.2    | 224SN/R112X114 | 1 1/2 x 1 1/4            |
| 2 x 1                    | 124SN-R2X1     | 29.4   | 38.9   | 48.4    | 224SN/R2X1     | 2 x 1                    |
| 2 x 1 1/4                | 124SN-R2X114   | 32.5   | 38.9   | 48.4    | 224SN/R2X114   | 2 x 1 1/4                |
| 2 x 1 1/2                | 124SN-R2X112   | 35.7   | 38.9   | 48.4    | 224SN/R2X112   | 2 x 1 1/2                |
| 2 1/2 x 2                | 124SN-R212X2   | 38.9   | 45.2   | 54.7    | 224SN/R212X2   | 2 1/2 x 2                |
| 3 x 1                    | 124SN-R3X1     | 29.6   | 47.8   | 56.8    | 224SN/R3X1     | 3 x 1                    |
| 3 x 2                    | 124SN-R3X2     | 39.5   | 47.8   | 56.8    | 224SN/R3X2     | 3 x 2                    |
| 3 x 2 1/2                | 124SN-3X212    | 45.9   | 47.8   | 56.8    | 224SN/3X212    | 3 x 2 1/2                |
| 4 x 2                    | 124SN-R4X2     | 39.5   | 59.0   | 68.0    | 224SN/R4X2     | 4 x 2                    |
| 4 x 3                    | 124SN-R4X3     | 49.1   | 59.0   | 68.0    | 224SN/R4X3     | 4 x 3                    |
| 6 x 4                    | 124SN-R6X4     | 58.7   | 78.5   | 91      | 224SN/R6X4     | 6 x 4                    |



(Fig. B)

## Tee Brass Insert



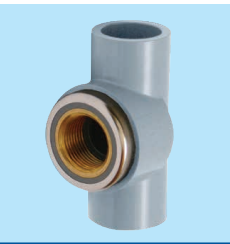
PVC Tee Brass Insert (Fig. A)

cPVC Tee Brass Insert (Fig. B)



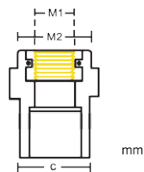
(Fig. A)

| Nominal Pipe Size (inch) | PVC Code #      | C (mm) | M1 (inch) | M2 (mm) | cPVC Code #        | Nominal Pipe Size (inch) |
|--------------------------|-----------------|--------|-----------|---------|--------------------|--------------------------|
| 1/2 x 1/2 x 1/2          | 144SN-TF-12BR   | 29.85  | 1/2       | 37.80   | 244SN /TF12BR      | 1/2 x 1/2 x 1/2          |
| 3/4 x 3/4 x 3/4          | 144SN-TF-34BR   | 35.54  | 3/4       | 45.00   | 244SN / TF34BR     | 3/4 x 3/4 x 3/4          |
| 3/4 x 1/2 x 3/4          | 144SN-TF34X12BR | 35.54  | 1/2       | 37.80   | 244 SN / TF34X12BR | 3/4 x 1/2 x 3/4          |



(Fig. B)

## Female Adapters Brass Insert



PVC Female Adapters Brass Insert (Fig. A)

cPVC Female Adapters Brass Insert (Fig. B)



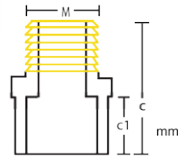
(Fig. A)

| Nominal Pipe Size (inch) | PVC Code #     | C (mm) | M1 (inch) | M2 (mm) | cPVC Code #    | Nominal Pipe Size (inch) |
|--------------------------|----------------|--------|-----------|---------|----------------|--------------------------|
| 1/2 x 1/2                | 144SN-F12BR    | 29.85  | 1/2       | 37.80   | 224SN/F12BR    | 1/2 x 1/2                |
| 3/4 x 1/2                | 144SN-F34X12BR | 35.54  | 1/2       | 37.80   | 244SN/F34X12BR | 3/4 x 1/2                |
| 3/4 x 3/4                | 144SN-F34BR    | 34.67  | 3/4       | 44.70   | 244SN/F34BR    | 3/4 x 3/4                |
| 1 x 1                    | 144SN-F1BR     | 42.76  | 1         | 51.6    | 244SN/F1BR     | 1 x 1                    |
| 1 1/4 x 1 1/4            | 144SN-F114BR   | 52.12  | 1 1/4     | 60.0    | 244SN/F114BR   | 1 1/4 x 1 1/4            |
| 1 1/2 x 1 1/2            | 144SN-F112BR   | 58.76  | 1 1/2     | 68.0    | 244SN/F112BR   | 1 1/2 x 1 1/2            |
| 2 x 2                    | 144SN-F2BR     | 71.71  | 2         | 80.0    | 244SN/F2BR     | 2 x 2                    |



(Fig. B)

## Male Adapters Brass Insert



PVC Male Adapters Brass Insert (Fig. A)

cPVC Male Adapters Brass Insert (Fig. B)



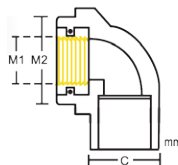
(Fig. A)

| Nominal Pipe Size (inch) | PVC Code #   | C (mm) | M (inch) | C1 (mm) | cPVC Code #  | Nominal Pipe Size (inch) |
|--------------------------|--------------|--------|----------|---------|--------------|--------------------------|
| 1/2 x 1/2                | 143SN-K12BR  | 44.22  | 1/2      | 29.74   | 243SN/K12BR  | 1/2 x 1/2                |
| 3/4 x 3/4                | 143SN-K34BR  | 48.40  | 3/4      | 35.47   | 243SN/K34BR  | 3/4 x 3/4                |
| 1 x 1                    | 143SN-K1BR   | 54.78  | 1        | 43.24   | 243SN/K1BR   | 3/4 x 1/2                |
| 1 1/4 x 1 1/4            | 143SN-K114BR | 64.2   | 1 1/4    | 31.75   | 243SN/K114BR | 1 1/4 x 1 1/4            |
| 1 1/2 x 1 1/2            | 143SN-K112BR | 69.3   | 1 1/2    | 31.0    | 243SN/K112BR | 1 1/2 x 1 1/2            |
| 2 x 2                    | 143SN-K2BR   | 78.7   | 2        | 38.1    | 243SN/K2BR   | 2 x 2                    |
| 2 1/2 x 2 1/2            | 143SN-K212BR | 86.1   | 2 1/2    | 44.5    | 243SN/K212BR | 2 1/2 x 2 1/2            |
| 3 x 3                    | 143SN-K3BR   | 97.3   | 3        | 47.6    | 243SN/K3BR   | 3 x 3                    |
| 4 x 4                    | 143SN-K4BR   | 111.9  | 4        | 57.2    | 243SN/K4BR   | 4 x 4                    |



(Fig. B)

## Elbows (90°) Brass Insert



PVC Elbow (90°) Brass Insert (Fig. A)

cPVC Elbow (90°) Brass Insert (Fig. B)



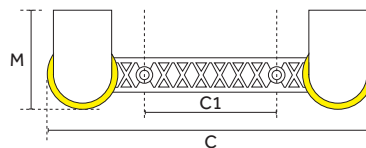
(Fig. A)

| Nominal Pipe Size (inch) | PVC Code #      | C (mm) | M1 (inch) | M2 (mm) | cPVC Code #     | Nominal Pipe Size (inch) |
|--------------------------|-----------------|--------|-----------|---------|-----------------|--------------------------|
| 1/2 x 1/2                | 144SN-GF12BR    | 29.85  | 1/2       | 37.80   | 244SN/GF12BR    | 1/2 x 1/2                |
| 3/4 x 3/4                | 144SN-GF34BR    | 35.54  | 3/4       | 45.00   | 244SN/GF34BR    | 3/4 x 3/4                |
| 3/4 x 1/2                | 144SN-GF34X12BR | 35.54  | 1/2       | 37.80   | 244SN/GF34X12BR | 3/4 x 1/2                |
| 1 1/2 x 1 1/2            | 144SN-GF112BR   | 58.76  | 1 1/2     | 68.00   | 244SN/GF112BR   | 1 1/2 x 1 1/2            |
| 1 x 1                    | 144SN-GF1BR     | 42.76  | 1         | 51.6    | 244SN/GF1BR     | 1 x 1                    |
| 2 x 2                    | 144SN-GF2BR     | 71.71  | 2         | 80.00   | 244SN/GF2BR     | 2 x 2                    |



(Fig. B)

## Elbows (90°) Double Brass Insert



PVC Elbow (90°) Double Brass Insert (Fig. A)

cPVC Elbow (90°) Double Brass Insert (Fig. B)

| Nominal Pipe Size (inch) | PVC Code #       | C (mm) | C1 (inch) | M (mm) | cPVC Code #      | Nominal Pipe Size (inch) |
|--------------------------|------------------|--------|-----------|--------|------------------|--------------------------|
| 3/4 x 1/2                | 144SN-GFD34x12BR | 193.9  | 3.11      | 58.5   | 244SN/GFD34X12BR | 3/4 x 1/2                |

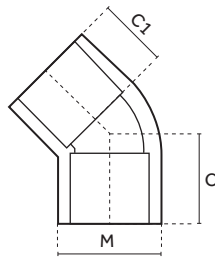


(Fig. A)



(Fig. B)

# Schedule 80 PVC & cPVC Fittings



## ELBOW (45°)

PVC Elbow 45° (Fig. A)

cPVC Elbow 45° (Fig. B)

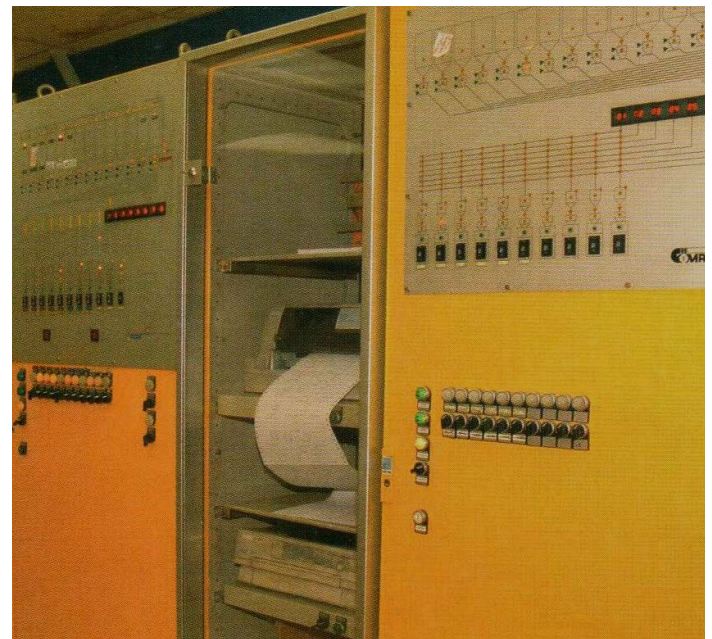


(Fig. A)

| Nominal Pipe Size (inch) | PVC Code # | C (mm) | C1 (mm) | M (mm) | cPVC Code # | Nominal Pipe Size (inch) |
|--------------------------|------------|--------|---------|--------|-------------|--------------------------|
| 1/2                      | 124SN-H12  | 29.5   | 22.5    | 29.54  | 224SN/H12   | 1/2                      |
| 3/4                      | 124SN-H34  | 34.5   | 26.6    | 35.31  | 224SN/H34   | 3/4                      |
| 1                        | 124SN-H1   | 37.6   | 29.7    | 43.16  | 224SN/H1    | 1                        |
| 1 1/4                    | 124SN-H114 | 42.4   | 32.2    | 52.72  | 224SN/H114  | 1 1/4                    |
| 1 1/2                    | 124SN-H112 | 47.0   | 33.5    | 59.36  | 224SN/H112  | 1 1/2                    |
| 2                        | 124SN-H2   | 55.0   | 38.5    | 72.33  | 224SN/H2    | 2                        |
| 2 1/2                    | 124SN-H212 | 63.5   | 45.7    | 87.40  | 224SN/H212  | 2 1/2                    |
| 3                        | 124SN-H3   | 69.5   | 49.5    | 105.6  | 224SN/H3    | 3                        |
| 4                        | 124SN-H4   | 83.92  | 57.8    | 132.96 | 224SN/H4    | 4                        |
| 6                        | 124SN-H6   | 123.2  | 77.7    | 191.43 | 224SN/H6    | 6                        |



(Fig. B)



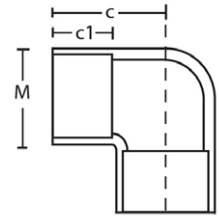
# IX. Schedule 40 PVC Fittings

## Elbows (90°)

PVC Elbows (90°) (Fig. A)



| Nominal Pipe Size (inch) | Code Number | C (mm) | C1 (mm) | M (mm) |
|--------------------------|-------------|--------|---------|--------|
| 1/2                      | 123.SN.G12  | 33.93  | 19.65   | 27.60  |
| 3/4                      | 123.SN.G34  | 40.45  | 24.95   | 33.30  |
| 1                        | 123.SN.G1   | 45.11  | 27.65   | 40.70  |
| 1 1/4                    | 123.SN.G114 | 55.26  | 31.05   | 49.90  |
| 1 1/2                    | 123.SN.G112 | 60.00  | 33.40   | 56.20  |
| 2                        | 123.SN.G2   | 66.49  | 33.95   | 68.65  |



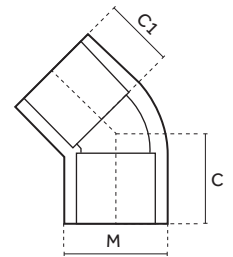
(Fig. A)

## Elbows (45°)

PVC Elbows (45°) (Fig. A)



| Nominal Pipe Size (inch) | Code Number | C (mm) | C1 (mm) | M (mm) |
|--------------------------|-------------|--------|---------|--------|
| 2                        | 123.SN.H2   | 45.50  | 30.0    | 68.65  |
| 3                        | 123.SN.H3   | 70.60  | 17.63   | 100.49 |
| 6                        | 123.SN.H6   | 128.24 | 83.0    | 183.50 |



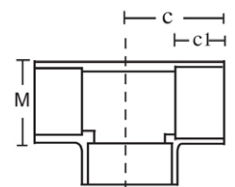
(Fig. A)

## Tees

PVC Tees (Fig. A)



| Nominal Pipe Size (inch) | Code Number | C (mm) | C1 (mm) | M (mm) |
|--------------------------|-------------|--------|---------|--------|
| 1/2                      | 123.SN.T12  | 31.65  | 19.65   | 27.70  |
| 3/4                      | 123.SN.T34  | 40.05  | 25.80   | 32.90  |
| 1                        | 123.SN.T1   | 44.30  | 28.10   | 41.30  |
| 1 1/4                    | 123.SN.T114 | 54.50  | 31.40   | 49.90  |
| 1 1/2                    | 123.SN.T112 | 60.15  | 33.90   | 56.20  |
| 2                        | 123.SN.T2   | 67.35  | 34.45   | 68.60  |
| 6 x 4                    | 123SN.T6X4  | 165    | 80.7    | 183.7  |
| 6                        | 123SN.T6    | 165.29 | 77.27   | 184.26 |



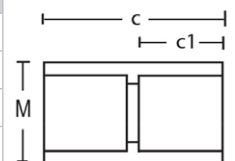
(Fig. A)

## Couplings

PVC Couplings (Fig. A)



| Nominal Pipe Size (inch) | Code Number | C (mm) | C1 (mm) | M (mm) |
|--------------------------|-------------|--------|---------|--------|
| 1/2                      | 123.SN.M12  | 53.00  | 19.84   | 28.57  |
| 3/4                      | 123.SN.M34  | 62.20  | 19.84   | 34.95  |
| 1                        | 123.SN.M1   | 67.50  | 25.90   | 41.27  |
| 1 1/4                    | 123.SN.M114 | 74.35  | 26.98   | 50.8   |
| 1 1/2                    | 123.SN.M112 | 82.40  | 30.16   | 57.15  |
| 2                        | 123.SN.M2   | 94.00  | 38.70   | 69.04  |



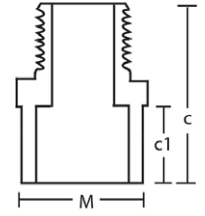
(Fig. A)

## Schedule 40 PVC &amp; cPVC Fittings

## Male Adapters

## PVC Male Adapters (Fig. A)

| Nominal Pipe Size (inch) | Code Number | C (mm) | C1 (mm) | M (mm) |
|--------------------------|-------------|--------|---------|--------|
| 1/2                      | 123.SN.K12  | 41.60  | 18.85   | 27.60  |
| 3/4                      | 123.SN.K34  | 48.35  | 25.50   | 33.30  |
| 1                        | 123.SN.K1   | 59.70  | 28.35   | 40.75  |
| 1 1/4                    | 123.SN.K114 | 210.9  | 93.75   | 125.3  |
| 1 1/2                    | 123.SN.K112 | 293.75 | 112.5   | 223.4  |
| 2                        | 123.SN.K2   | 254.7  | 117.18  | 273.43 |

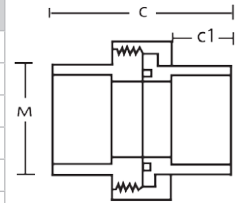


(Fig. A)

## Unions

## PVC Unions (Fig. A)

| Nominal Pipe Size (inch) | Code Number | C (mm) | C1 (mm) | M (mm) |
|--------------------------|-------------|--------|---------|--------|
| 1/2                      | 123.SN.B12  | 60.33  | 23.02   | 30.16  |
| 3/4                      | 123.SN.B34  | 65.88  | 25.40   | 35.72  |
| 1                        | 123.SN.B1   | 73.03  | 29.37   | 42.86  |
| 1 1/4                    | 123.SN.B114 | 85.73  | 32.54   | 53.98  |
| 1 1/2                    | 123.SN.B112 | 98.43  | 35.72   | 60.33  |
| 2                        | 123.SN.B2   | 111.13 | 38.10   | 73.03  |

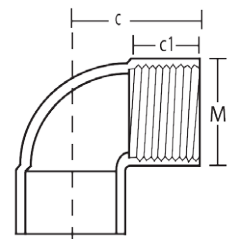


(Fig. A)

## Threaded Elbows

## PVC Threaded Elbows (Fig. A)

| Nominal Pipe Size (inch) | Code Number  | C (mm) | C1 (mm) | M (mm) |
|--------------------------|--------------|--------|---------|--------|
| 1/2                      | 123.SN.GF12  | 31.65  | 19.65   | 27.70  |
| 3/4                      | 123.SN.GF34  | 40.05  | 25.80   | 32.90  |
| 1                        | 123.SN.G1    | 44.30  | 28.10   | 41.30  |
| 1 1/4                    | 123.SN.GF114 | 54.50  | 31.40   | 49.90  |
| 1 1/2                    | 123.SN.GF112 | 60.15  | 33.90   | 56.20  |
| 2                        | 123.SN.GF2   | 67.35  | 34.45   | 68.60  |

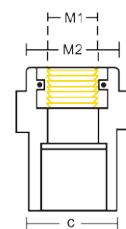


(Fig. A)

## Female Adapters Brass Insert

## PVC Female Adapters Brass Insert (Fig. A)

| Nominal Pipe Size (inch) | Code Number    | C (mm) | M1 (mm) | M2 (mm) |
|--------------------------|----------------|--------|---------|---------|
| 1/2 x 1/2                | 144SN.F12BR    | 29.85  | 1/2     | 37.8    |
| 3/4 x 3/4                | 144SN.F34BR    | 35.54  | 3/4     | 37.0    |
| 3/4 x 1/2                | 144SN.F34X12BR | 35.54  | 1/2     | 37.8    |



(Fig. A)



Manufacturing Plant

### New Products Industries Co. Ltd.

Manufacturing Plant, Jeddah

P. O. Box 460, Jeddah 21411. Kingdom of Saudi Arabia.

**Tel.** : +966 12 636 3558 / 1596 / 1205

**Fax** : +966 12 636 2364

**Email** : info@neproplast.com



شركة المؤسسة الوطنية للتسويق المحدودة  
NATIONAL MARKETING EST. CO. LTD.

Distributor

### JEDDAH

P. O. Box 16375, Jeddah 21464. Kingdom of Saudi Arabia.

**Tel.** : +966 12 227 3271

**Fax** : +966 12 227 1796

**Email** : nm.jeddah@ikkgroup.com

### RIYADH

P. O. Box 2729, Riyadh 11461. Kingdom of Saudi Arabia.

**Tel.** : +966 11 478 0015

**Fax** : +966 11 478 2567

**Email** : nm.riyadh@ikkgroup.com

### DAMMAM

P. O. Box 2145, Al Khobar 31952. Kingdom of Saudi Arabia.

**Tel.** : +966 13 892 6501

**Fax** : +966 13 847 1312

**Email** : namat.dammam@ikkgroup.com

### EXPORT

P. O. Box 16375, Jeddah 21464. Kingdom of Saudi Arabia.

**Tel.** : +966 12 627 8526

**Email** : export.namat@ikkgroup.com

**Email** : mahmoud.mesabbah@ikkgroup.com

**Customer Service**

**+966 9200 18858**

**www.namat.com**



شركة صناعات المنتجات الجديدة المحدودة  
NEW PRODUCTS INDUSTRIES CO. LTD.



## قطع توصيلات مياه الشرب و نظام الصرف الصحي



Intertek



Only products  
bearing the NSF mark  
are certified

بي في سي PVC و سي بي في سي CPVC جدول 40 و 80 مواصفات امريكيه ASTM



التوزيع من قبل شركة المؤسسة الوطنية للتسويق المحدودة  
Distributed by NATIONAL MARKETING EST. CO. LTD.  
[www.namat.com](http://www.namat.com)

